

# VILLA SP6

Super Paradise, MYKONOS

6 Bedrooms

6.5 Bathrooms

11 Guests



# ABOUT

This beautiful new built home mixes a luxurious style with a Cycladic design and modern comforts.

Beautiful interiors flow out onto panoramic sea-view terraces and the infinity private swimming pool, which spreads out over a variety of 3 levels to create numerous private and communal possibilities for living under the Mediterranean sun.

Walking into the house you enter the open plan lounge/kitchen area, which is the perfect place for chilling out, escaping the heat of the day and preparing some food or drinks. This level is surrounded by large windows that lead to the outdoor and pool area, offering majestic views from every corner.

A modern wooden staircase filled with natural light leads up to the 1st floor where you will find four bedrooms with king-size beds and one bedroom with a single bed. On the 2nd floor there is the master bedroom with a private terrace offering marvelous views. All the rooms have their own bathrooms, while three of them will enjoy stunning views of the sea.



# LOCATION

The villa is well protected from the north winds and enjoys spectacular views of the famous Super Paradise Bay, while is located only 150 meters away from the beach and some of the most popular beach bar-restaurants



## Distance to Main points

Mykonos airport	4,7km
Tourlos port	9,6km
Mykonos town	7,5km
Super market	4,5km

## Nearby beaches

Super Paradise	150m
Psarou (Nammós)	7,4km
Ornos	7,9,8km
Paraga	6,9km
Ftelia	8,5km
Agios Ioannis	9,3km
Kalo livadi	8,6km





## FEATURES

- 6 En-suite bedrooms
- Living room
- Open plan fully equipped kitchen
- 1 guest bathroom
- Dishwasher
- Espresso machines
- Private pool (20 sq.m)
- Sunbeds
- Outdoor lounge and dining area (wind protected)
- Bathroom Amenities
- High speed Wi-Fi Internet access
- Air conditioning
- Smart 4K HDTVs (satellite tv, Netflix, Youtube, etc),
- Alarm system
- Safe Boxes
- Private Parking (space for 5 cars)
- Washing and Dryer machine (upon request)
- Hair dryer in every room
- First aid kit

## Included Services

- 
- Daily light cleaning
  - Change of linen/towels twice per week
  - Pool professionally cleaned and maintained
  - Garden maintenance
  - 24/7 support by our team



# PROPERTY LAYOUT

- Land plot: 4,000m2
- Square footage of the villa: 370m2
- Square footage of the pool: 20m2



## Pool Level:

- Living room, fully equipped kitchen, 1 WC

## 1st Level:

- 4 bedrooms with ensuite bathroom/shower (King size 180x200/2 of those rooms have sea view and private balconies)
- 1 bedroom with ensuite bathroom/shower (Single 90x200)

## 2nd Level:

- 1 Master bedroom with ensuite bathroom (King size 180x200), private terrace

## Outdoors

- Private swimming pool, sunbeds, terrace, lounge & dining area

































































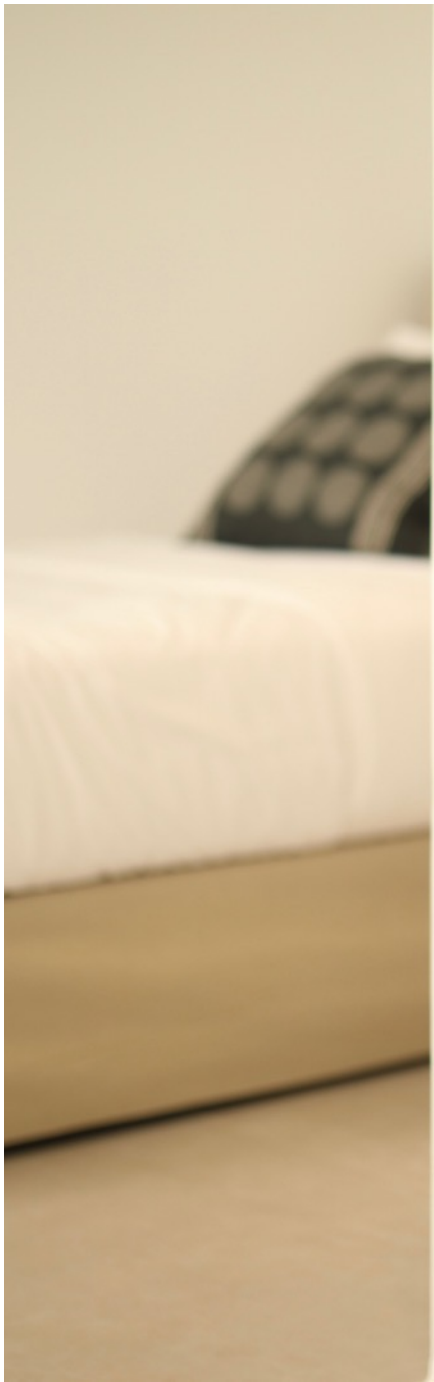


























































# PROPERTY POLICIES



## PAYMENT & CANCELLATION POLICY

The 30% deposit is NON-refundable. The remaining balance should be paid up to 60 days before check-in day.

In case of cancellation between 45 and 30 days prior check-in day the 25% of the total agreed contractual amount will be refunded.

After the 30th day prior to check-in day, no refund will be accepted.

## GENERAL STAY POLICIES

- Check-in time: after 3.00 pm
- Check-out time: until 11.00 am
- Smoking is not allowed indoors
- Events and pets allowed upon request

Registration Number: 1274729